

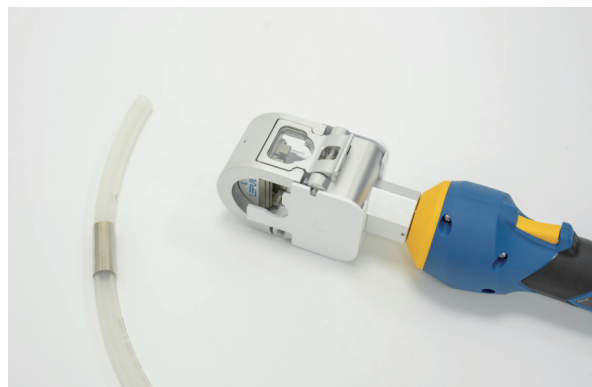
# Aseptic Disconnecter

With the widespread application of disposable solutions in the biotechnology industry, economical and reliable disconnection solutions have become focus for more customers. Lepure Biological's sterile disconnecting pliers use physical pressing and physical disconnecting processes to physically disconnect the metal ring on the pipeline, quickly and safely achieving sterile disconnection of the pipeline.

After extensive testing, it has been proven that sterile disconnecting pliers and metal disconnecting rings are very suitable for most application scenarios in the production of biopharmaceuticals, vaccines, cells, and gene therapies.

## Advantage

- ◎ Fast Disconnection Time  
 Seal and disconnect in less than 5 seconds on a wide range of tube sizes and materials.
- ◎ Intuitive Operation  
 Disconnect in one step — just cut the collar. Simple operation reduces risk of error.
- ◎ Secure and Trusted Seal  
 Testing validates that the aseptic seal is stronger than the tube, ensuring reliability.
- ◎ Shear strength  
 The battery-driven hand-held disconnecting pliers can easily disconnect 3/4 "(19.0mm) pipe fittings.



## Technical specification

Item	Parameters
weight	2.5 kg
Time	5 s
Thrust	15 kN
Battery voltage	18 V
Charging time	0.5 h
Cutting times	200 at least
Cutting pipe diameter type	1/4" - 3/4" (7 Tube OD)
Interchangeable blade	Yes
Compatibility	Small Cutter: $6\text{mm} \leq \text{OD} \leq 1/2"$ Big Cutter: $5/8" \leq \text{OD} \leq 3/4"$



## More Features

### ◎ Interchangeability and universality

There are two different cutting heads for disconnecting pliers, and the cutting heads are easy to replace.

Users can change the size of the cutting head according to their own usage needs, and use the corresponding disconnection ring to disconnect the pipeline.

PS: The blade side blade may wear out with increasing usage and needs to be replaced regularly.



Big Cutter



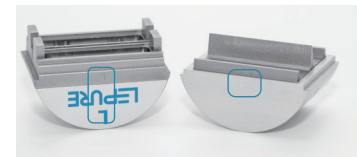
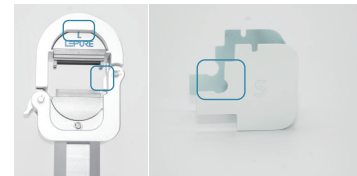
Small Cutter

### ◎ Recognition and usability

1) Whether it is the blade or the positioning sleeve, there are corresponding L and S to inform users to use matching components;

2) When installing the cutting head, a limit stop is added on one side to ensure that the user installs it in place every time;

3) The pipeline positioning sleeve matched with large and small cutting heads can prevent users from using small cutting heads to cut large pipes.



### ◎ Large cutting window

Unique cropped large window for intuitive visibility.

Users can confirm in real-time whether the ring is centered during cutting, reducing the phenomenon of cutting deviation caused by pipeline sliding.



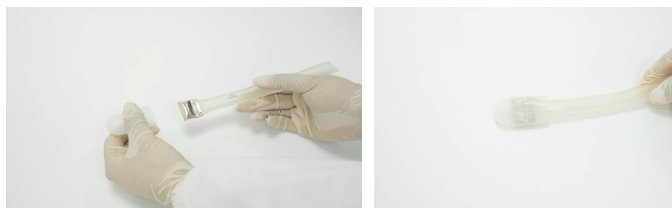
### ◎ Counting function

When the cutting is completed, the device will count the times on the display screen. Users can reasonably control the service life of the cutting head by counting the number of times they have started and are currently using it. Manage and trace the use of the blade according to the number of the blade.



### © Protective cap

Use protective caps to protect the cut off ring after disconnection, thereby protecting bags, hands, or other disposable systems from the risk of being scratched.



## Ordering information

Item	Cat.No.	Packaging
Small-diameter aseptic disconnecter	BKA1	1 pcs
Large-diameter aseptic disconnecter	BKA2	1 pcs
Aseptic Disconnecter	BKA3	1 pcs
Big Cutter	BKA004	1 pcs
Small Cutter	BKA005	1 pcs
Big Cutter (pressure bearing part)	BKA006	1 pcs
Small Cutter (pressure bearing part)	BKA007	1 pcs
Battery	BKA008	1 pcs
Small diameter positioning sleeve	BKA009	1 pcs
Big diameter positioning sleeve	BKA010	1 pcs
OD1/4" protective cap	BKA011	50 pieces/pack
OD5/16" protective cap	BKA013	50 pieces/pack
OD3/8" protective cap	BKA014	50 pieces/pack
OD7/16" protective cap	BKA015	50 pieces/pack
OD1/2" protective cap	BKA016	50 pieces/pack
OD5/8" protective cap	BKA017	25 pieces/pack
OD3/4" protective cap	BKA012	25 pieces/pack